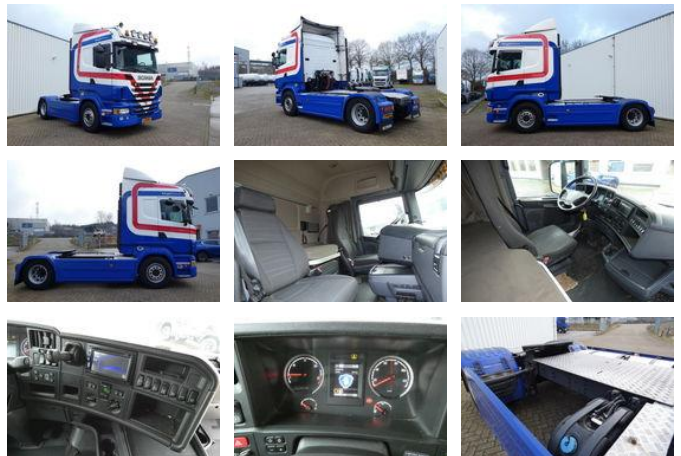


Scania R400 PDE | EURO 5 | Dutch registration

General features

Brand	Scania
Model	R400
Subcategory	Cab over engine
Licence plate	21-BDB-4
Odometer reading	1.049.439km
Construction year	2013
Date of first registration	28-08-2013
Color	White
Condition	Used
Fuel	Diesel
Emission class	Euro 5
Reference	250010



Characteristics

Empty weight	7.431kg
Load capacity	11.169kg
GWV	18.600kg
Length	596cm
Width	255cm
Cabin	Sleeper cabin
Serial number	YS2R4X20005327062
Cylinder contents	12.742cc

Scania R400 PDE | EURO 5 | Dutch registration

Technical specifications

Number of axes	2
Axis configuration	4x2
Transmission	Automatic
Engine output	294kw

Description

Description: - Sleeper cabin - Steel suspension front - Air suspension rear - Automatic transmission OptiCruise 2P - Mileage: 1049439km (read tachograph) Feature sets: - Air-conditioning - Spoiler - Auxilary heating

Accessories

- Air conditioning
- Roof spoiler
- Vehicle heater
- Visor